

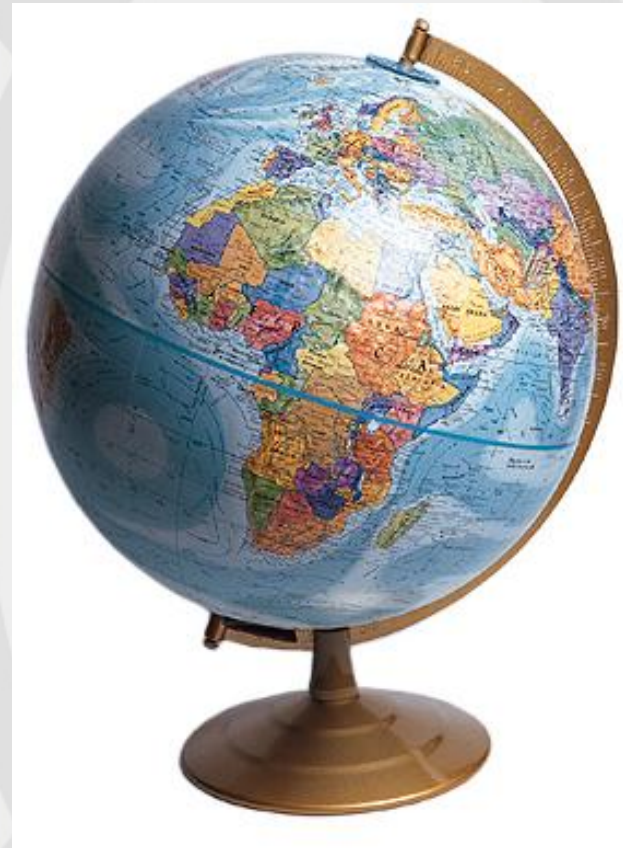
# International Networking, *the way forward*



**Dr. Shariq Ali FRCS**  
**Consultant Burns & Plastic Surgeon**  
**Head of Department**  
**Burn Centre**  
**CHK & Dow University of Health Sciences**

## Burns – Epidemiological Data

- 1.4 million burns/year in USA with 54 000 hospitalisations
- In India, 10 000 burn associated deaths and > 1 million moderate to severe burns each year
- >90% of burn injuries are in developing world
- >70% of burn injuries globally are in children



# Burns - The Global Burden



How many

Where



Disability

Cost

# Burns – Outcome Data

- 90% TBSA can survive
- 40% Frequently fatal



## International Network for Training, Education & Research in Burns



Choithram Hospital,  
Burns Centre,  
Indore, India



Welsh Centre for Burns,  
Swansea, Wales, UK



Dow Medical College  
Burns Centre,  
Karachi, Pakistan

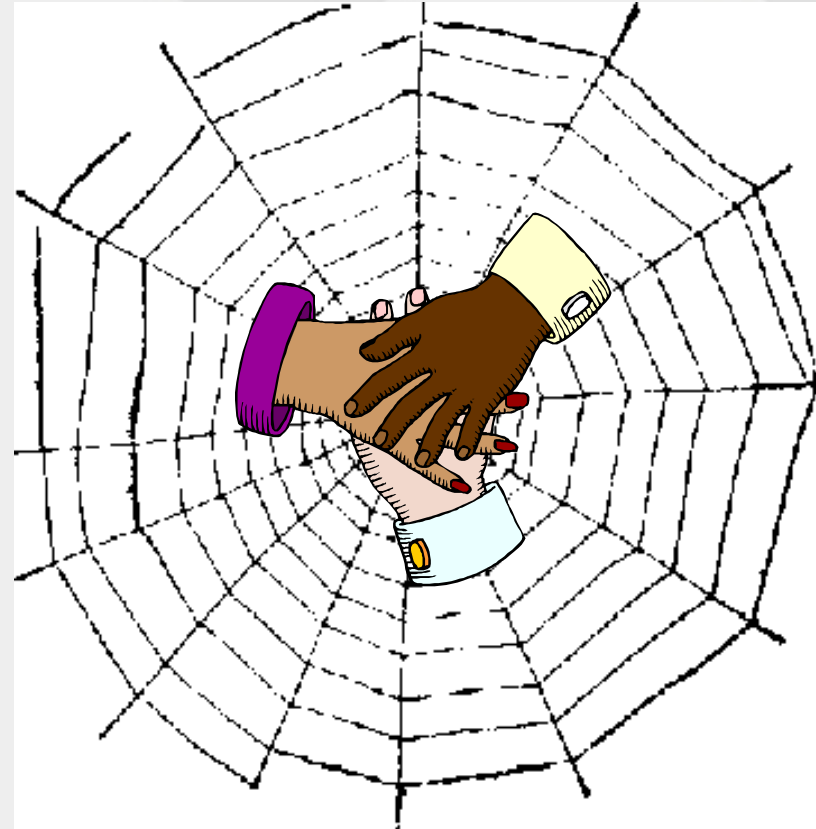
## Mission Statement



To reduce the global burden of burn related deaths and disabilities by stimulating appropriate training, education, research and prevention programs

# The Future

- Develop and disseminate the EBC course
- Expand the network
- Encourage multi lateral exchange across the network
- Promote relevant and appropriate research
- Stimulate interest in burn care



# Training



## Essential Burn Care Course



# Research

Epidemiological

Clinical

Basic Science



# Training, Education and Research



# Public Awareness



Website

Educational DVDs

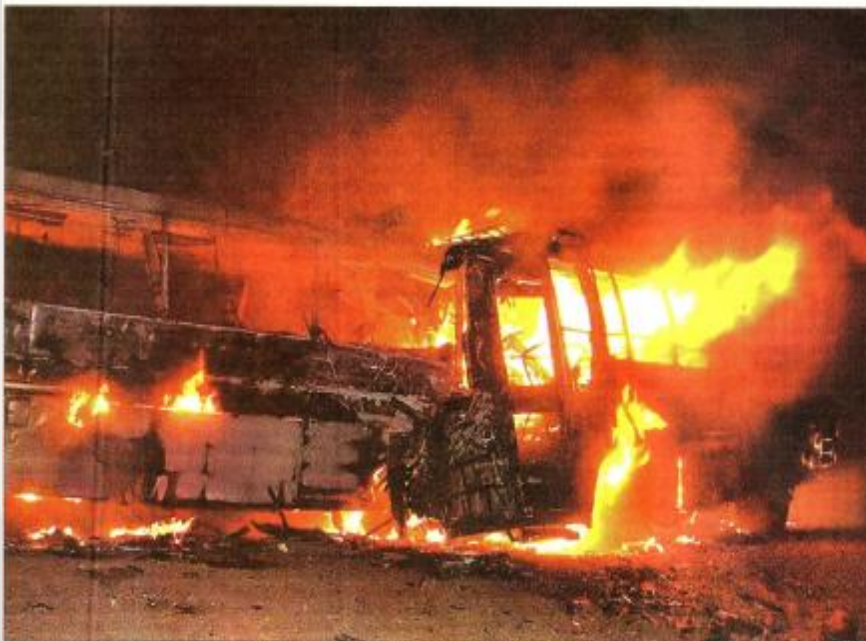
Public awareness leaflets



# Major Disasters not uncommon



<http://DAWN.com> Vol. LIX No. 264 Karachi, Sha'aban 21, 1426 Monday, September



BHANOT: Two buses went up in flames after a head-on collision on the Indus Highway between Manjhand and Sann, at a place about 65km from Hyderabad early on Sunday morning.—Online

## 10 burnt to death in bus-van collision

Rescue teams search for Rita victims

CAMERON PRAIRIE (Low)

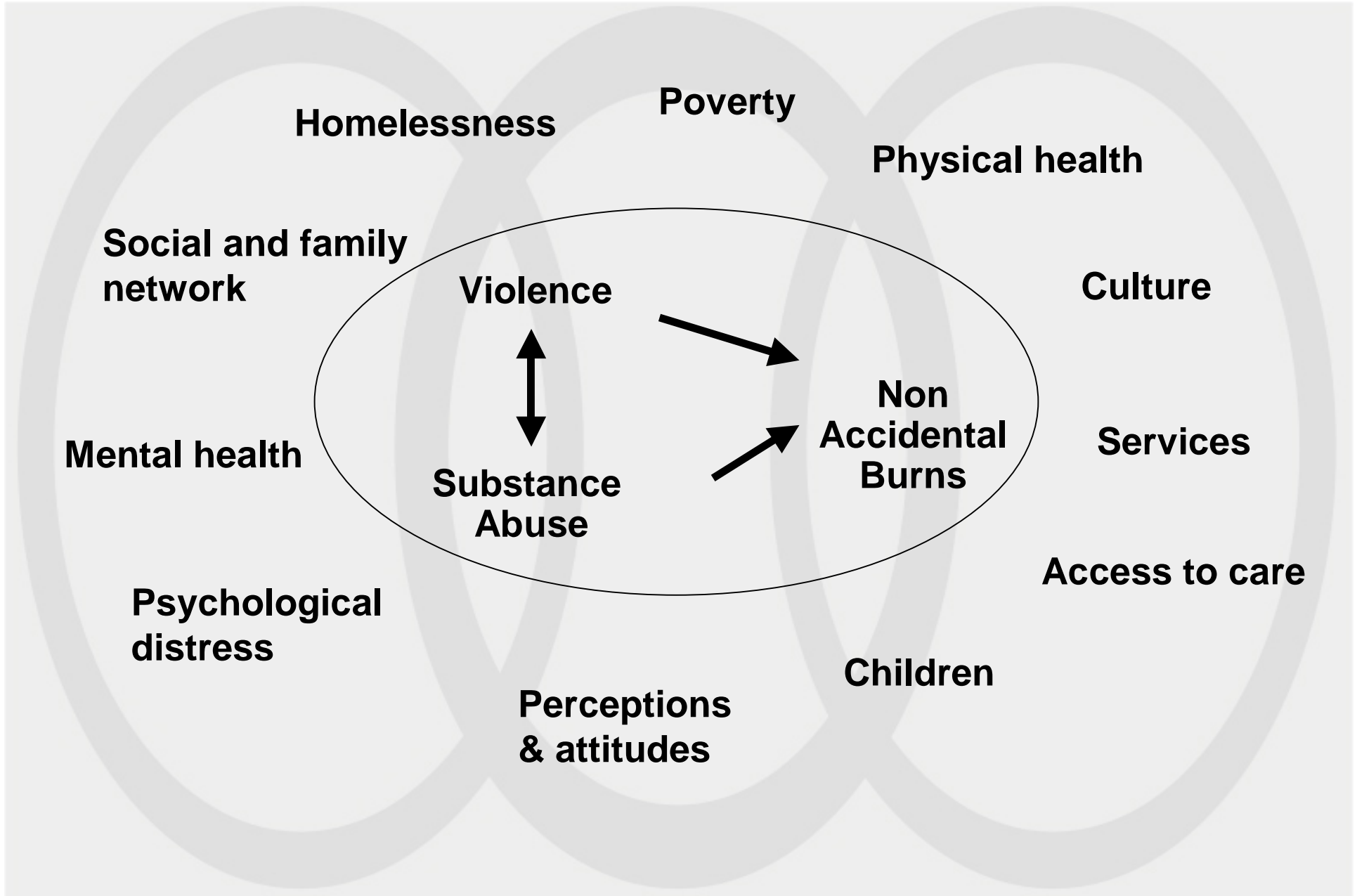


## Non Accidental Burn in Women

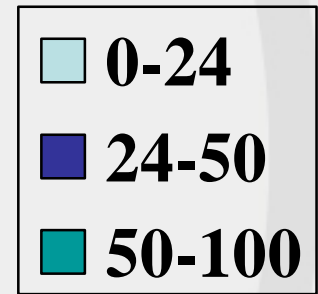
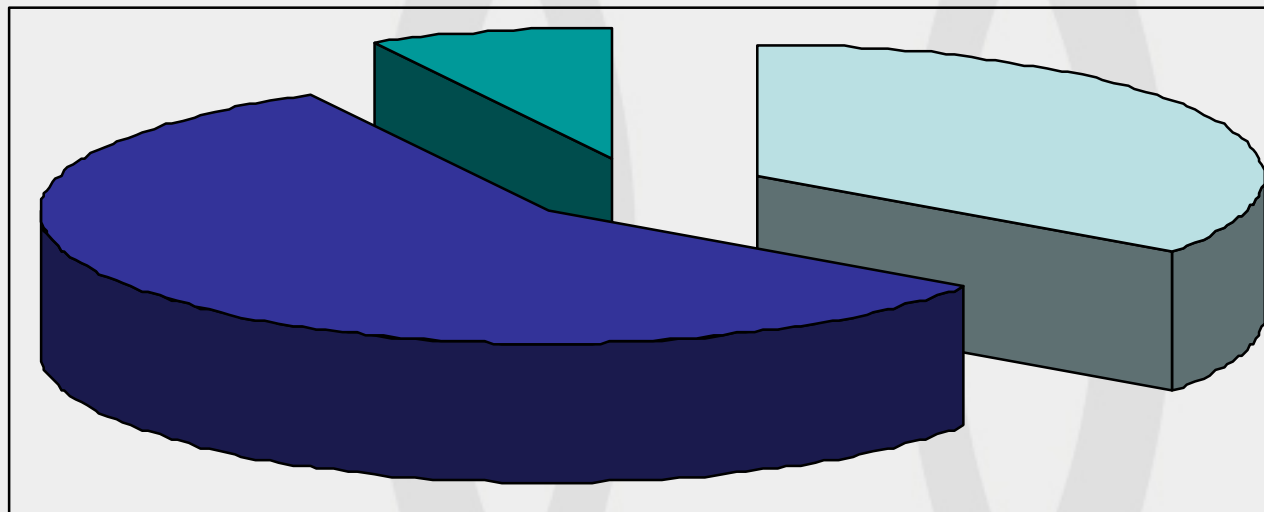
- **Economic dependency--- vulnerability to abuse. Largely non educated housewives**
- **Early marriage and early onset of abuse**
- **Prevalent across all segments of society**



# Within a Context

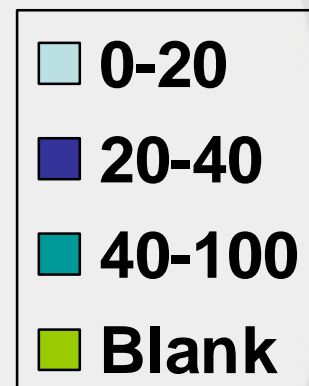
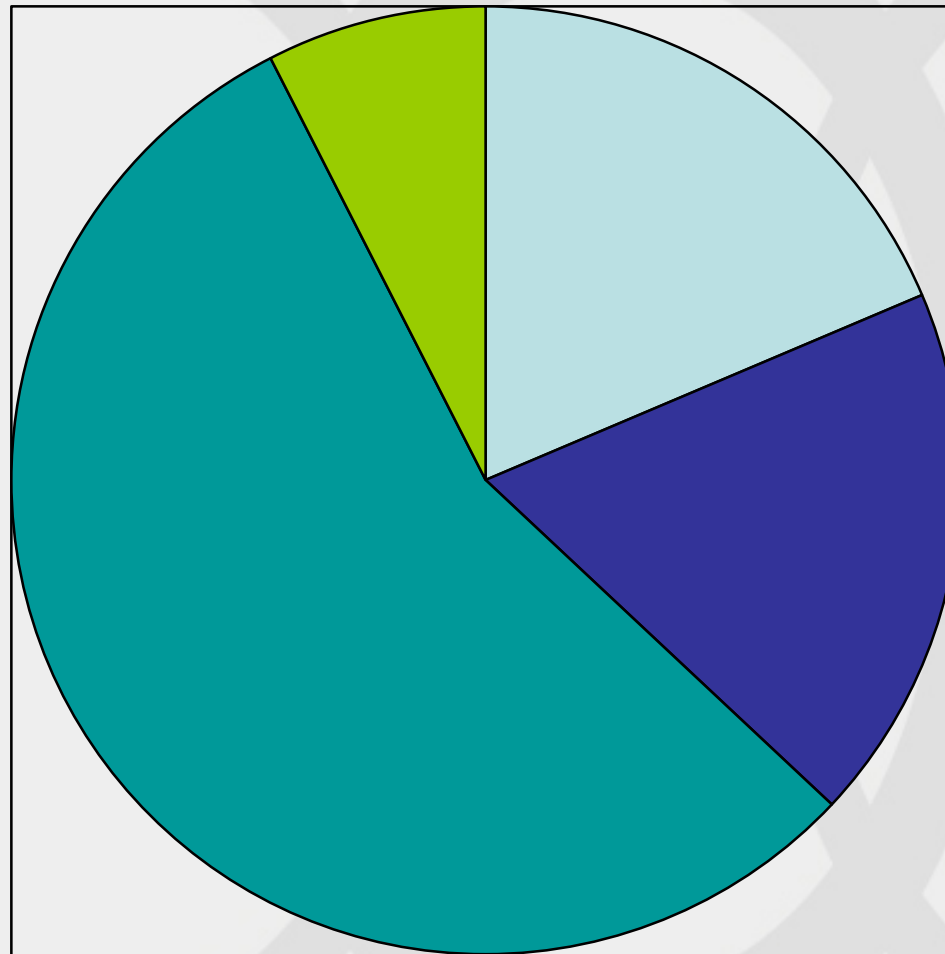


# AGE DISTRIBUTION 2006



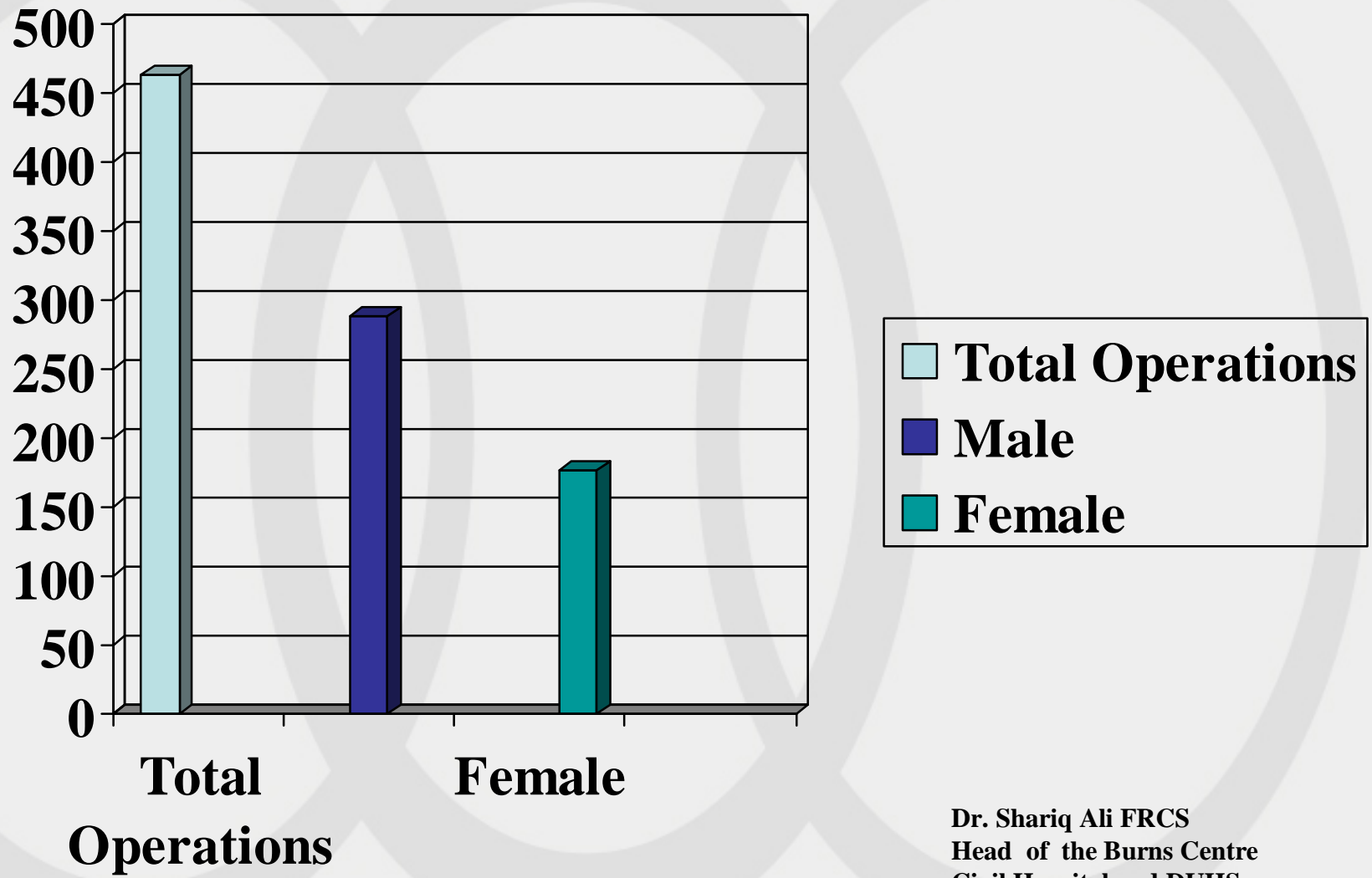
**Dr. Shariq Ali FRCS**  
**Head of the Burns Centre**  
**Civil Hospital and DUHS**

## DISTRIBUTION BY BURN PERCENTAGE IN 2006



**Dr. Shariq Ali FRCS**  
**Head of the Burns Centre**  
**Civil Hospital and DUHS**

# Operation Performed Since March till November, 2006



Dr. Shariq Ali FRCS  
Head of the Burns Centre  
Civil Hospital and DUHS

# Rehabilitation



## A Day in Burns Centre, Karachi...



- 4<sup>th</sup> March, 2007 at 1325
  - A patient, 26 year old brought after sustaining 11000 volts transmission wire electrical injury while trying to steal electricity for the home. He had non viable right upper limb extending to shoulder joint and non viable left hand extending to midforearm.
  - In our ICU
    - A mechanic is terminally ill after sustaining 82% flame burns when his diesel soaked clothes caught fire as the cigarette slipped out of his mouth while working....
    - A mother is waiting for a 24% scalded child to be dressed. he was unattended when he fell in a bucket full of hot water....

## After thoughts...

- Were these “Accidents”
  - High Tension Electrical burn while attempting to steal electricity...
  - Working with diesel soaked clothes and smoking...
  - Leaving a child nearby a bucket full of hot water....
- Were these preventable
  - Yes
  - Yes
  - Yes
- With best of treatment, can we ever make them 100% better?
- Is treatment always affordable?

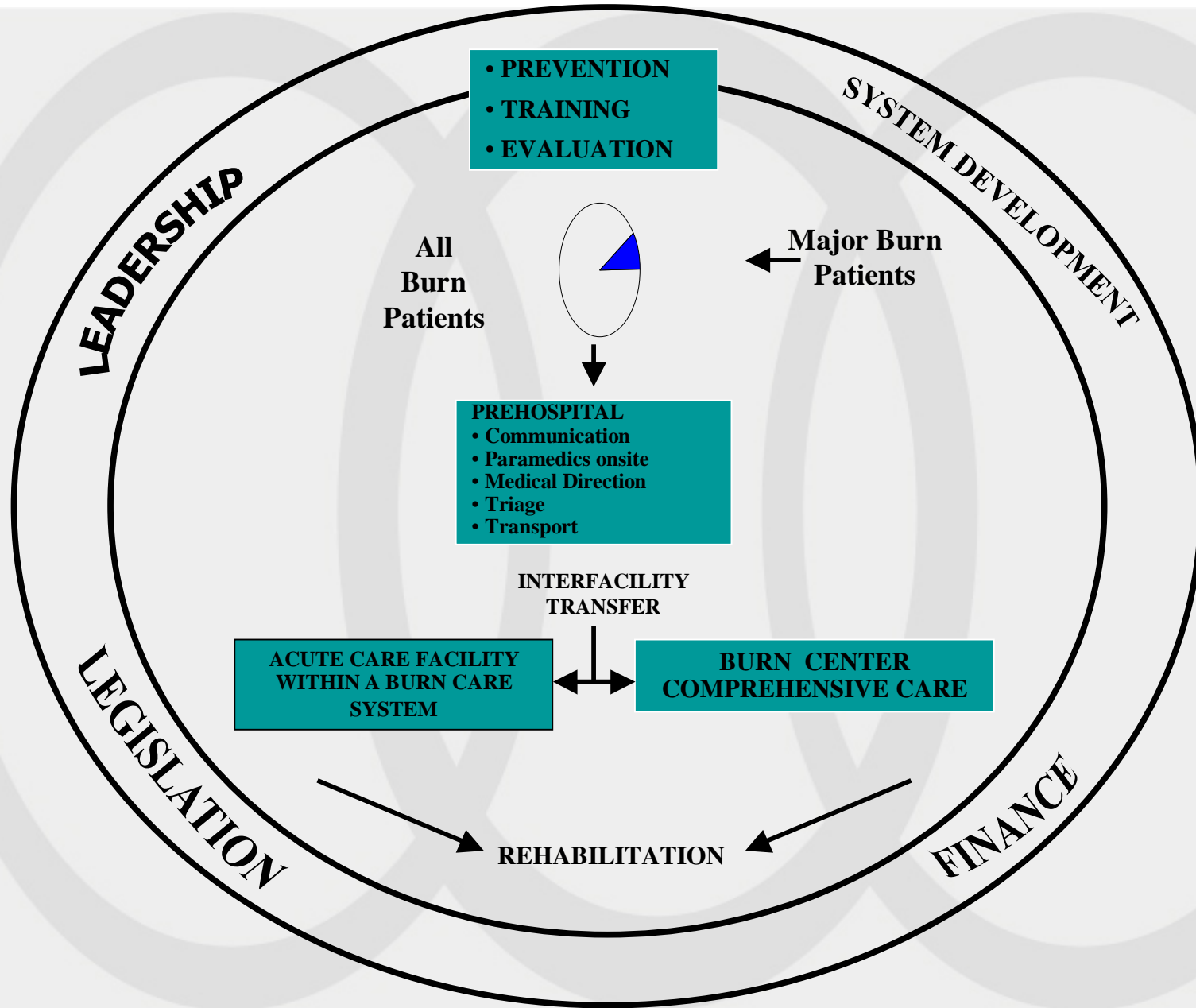
**Vision Zero**

# Solutions through Haddon's Matrix



	Host	Agent	Environment
Pre-Event	A light blue oval with a black border containing the text "Focus of Prevention" in a black, italicized font. This oval is centered over the intersection of the "Pre-Event" and "Event" rows and spans across the "Host", "Agent", and "Environment" columns.		
Event			
Post Event	Current Focus		

# Development Frame : Burn Care System



Thank you

